

## RUTHMANN HIGHquality

**The RUTHMANNSTEIGER® TK 310  
– with working heights of up to  
31 metres the biggest in its class.**

When hiring out hydraulic aerial platforms your customers expect a high operational reliability of the machines. Of course also as a cleaning company, paint shop, power supply company and horticulture company you must have a working cage with a powerful functioning you can rely on at any time.

But safety, operational reliability and stability are not the only important criterions of a machine for you. The unit above all must flexibly prove its worth especially during its daily use. Then the important things are particularly the fast and easy positioning, large outreach and agility.

The **RUTHMANNSTEIGER® TK 310** fulfils all these features decisive for you.



# RUTHMANNSTEIGER® TK 310

With the standard mounting on a 7,49 t commercial carrier-chassis this STEIGER® offers you a working height of up to 30,90 metres and a lateral outreach of up to 17,90 metres.

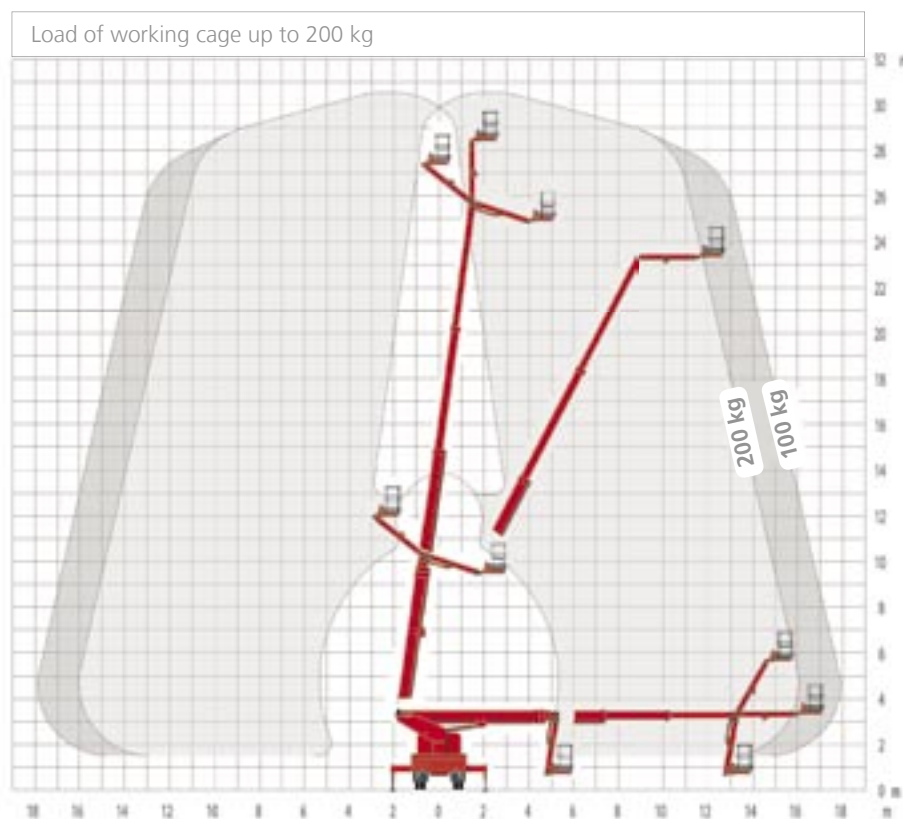
By means of the automatic positioning system supplied as standard execution you can bring this machine easily into start position in no time. The hydraulic aerial platform with its carrying capacity of 200 kgs lifts your operating staff quickly also to hardly accessible working places. The necessary stabilizing jacks are brought into position horizontally and vertically by only a few and easy steps and can also be extended and retracted unilaterally. In very restricted spaces the stabilizing jacks can also be extended in such a way that they remain within the vehicle profile.

Contact us – by phone, fax or E-mail. We would be pleased to give you detailed information concerning the performance spectrum of our proven STEIGER® and demonstrate profit and advantages arising for you.

## RUTHMANNSTEIGER® TK 310

Working height:	30,90 m
Lifting height:	28,90 m
Lateral outreach:	17,90 m*
Range of rotation:	450°
Swivelling angle of articulated top boom Rüssel®:	160°
Size of working cage:	1,40 x 0,70 m
Carrying capacity of working cage:	200 kg
Telescopic extension:	15,70 m
Permissible siting inaccuracy:	2°
Total height:	3,50 - 3,60 m
Perm. total weight:	from 7.490 kg

\* Depending on load and execution



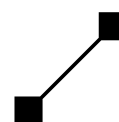
All dimensions in meters. All measurements and weights are approximate and refer to the standard basic execution. Technical alterations reserved. Steiger®, Gelenksteiger®, and Rüssel® are registered trademarks of Anton Ruthmann GmbH & Co. KG

### Anton Ruthmann GmbH & Co. KG

P.O.Box 12 63  
D-48705 Gescher-Hochmoor

Fon: +49 (0) 28 63/2 04-0  
Fax: +49 (0) 28 63/2 04-2 12

Internet: [www.ruthmann.de](http://www.ruthmann.de)  
E-mail: [vertrieb@ruthmann.de](mailto:vertrieb@ruthmann.de)



**RUTHMANN**  
HIGHquality